

# Mixsol Sdn Bhd Company Profile

## Company Introduction

Mixsol Sdn Bhd is your one-stop comprehensive and extensive IT solution company, dedicated to modern world of advanced technologies.

Mixsol Sdn Bhd employs experienced and skillful personnel to provide servicing and consultation for your technological needs. Our services cover end-to-end solutions for software development, data warehousing, business intelligence, as well as networking solutions.

## Company History & Location

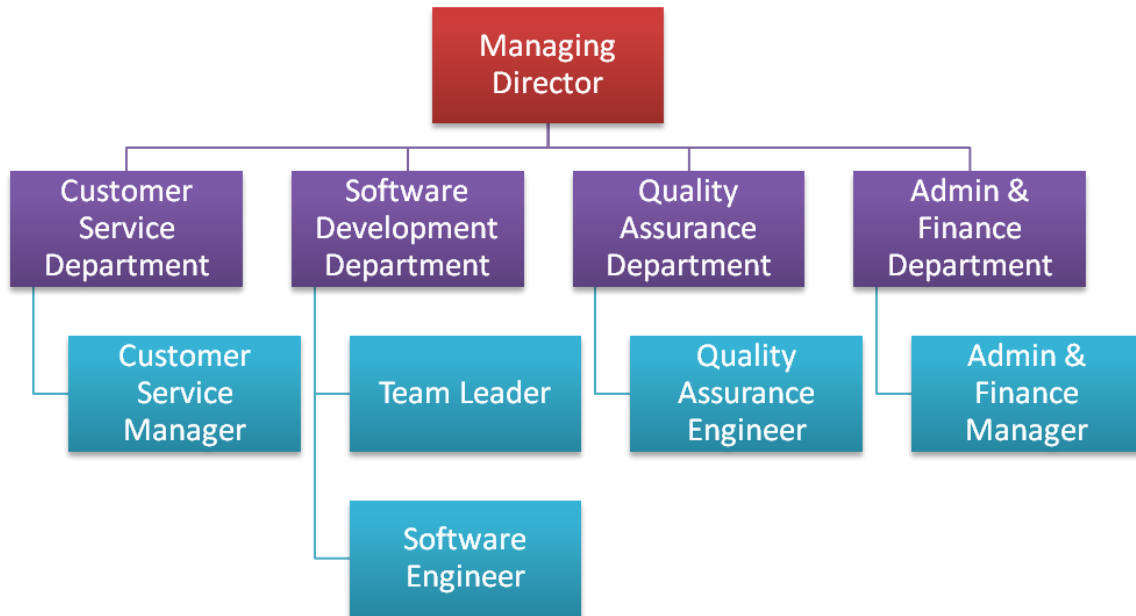
Mixsol Sdn Bhd was founded in 2006 by experienced IT professionals with a variety of skill sets, such as java programming, IBM Websphere, DB2, Oracle, data warehousing, business intelligence and networking. The company is currently located in Technology Park Malaysia, Kuala Lumpur. For further information, please refer to our website at <http://www.miramaxsolution.com>

## Company Registration

Business Name	<b>Mixsol Sdn Bhd</b>
Business Registration No.	739740-A
Date of Incorporation	4th July 2006
Business Address	Lot 2-1A, Support Services, Technology Park Malaysia, Lebuhraya Puchong-Sg. Besi, Bukit Jalil, 57000 Kuala Lumpur
Telephone	+6016 2133 405
Facsimile	+603 8994 1512
Authorized Capital	RM 100,000.00
Paid Up Capital	RM 50,602.00
Directors	Chong Yee Ping <i>Managing Director</i>
Banker	<b>OCBC Bank (Malaysia) Berhad (295400-W)</b> 89, 91 & 93 Jalan SS 21/60, Damansara Utama 47400 Petaling Jaya
Company Auditor	<b>Prosev Corporate Consultancy S/B (579549-D)</b> No. 5-2, Jln Puteri 2/6, Bandar Puteri 47100 Puchong, Selangor
Company Secretary	<b>Prosev Corporate Consultancy S/B (AF1415)</b> No. 5-2, Jln Puteri 2/6, Bandar Puteri 47100 Puchong, Selangor

---

## Organisation Chart



## Services Provided

### Customized Software Architecture Consultation & Implementation

Mixsol has experienced software development team with qualified consultants, system analysts, QA engineers and developers, to help accelerate implementation at any phase of the project development. In addition to software development, we are also offering software consultation services to corporate. The offered services include software structure and design consultation, database design and performance tuning consultation and system analyst services.

### Data Warehousing Consultation

Mixsol also specializes in Data Warehousing and Business Intelligence tools such as IBM OLAP, IBM Data Warehouse, IBM Cube View, Alphablox and Data-Stage. We have implemented several projects in data warehousing for prominent clients, such as MAS and Maxis. With the experience and skills we have gathered from the past projects, we guarantee our commitment in implementing data warehousing for your company needs.

### Technical Outsourcing

With our first class technological expertise, Mixsol is able to provide the following outsourcing services.

- Application Outsourcing
- System Maintenance Outsourcing
- Business Process Outsourcing

Mixsol is well-equipped with the resources to help you focus mainly on your core business while we handle for you the non-core business which is still essential in the running of operations. To accomplish this, Mixsol is committed to provide excellent outsource services in system development, database administration, performance tuning, and application support over critical period.

---

## Our Solutions

### e-Portal

Mixsol e-Portal has a web-based e-commerce solution that provides business enterprises with the ability to showcase and sell their products and services globally over the Internet. It is designed to facilitate businesses in achieving their business objectives and empower them to run ahead of competition.

Mixsol e-Portal is built and designed to the exact way based on your business needs, with rapid deployment, customization flexibility and seamless integration to your legacy system. Our system can be implemented in incremental phases and has the design flexibility to cope with any future requirements.

### Customer Relationship Management (CRM)

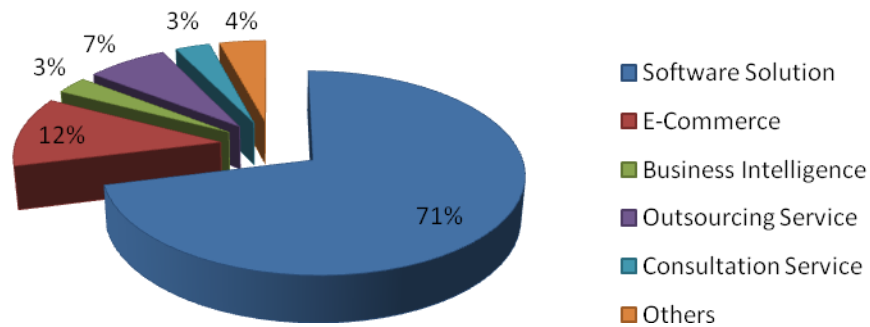
Mixsol CRM module helps you to understand and learn more about customer's needs and behaviors in order to develop stronger relationships with them. This module delivers a list of sub modules that help you to enhance marketing effectiveness, drive sales performance and improve customer satisfaction.



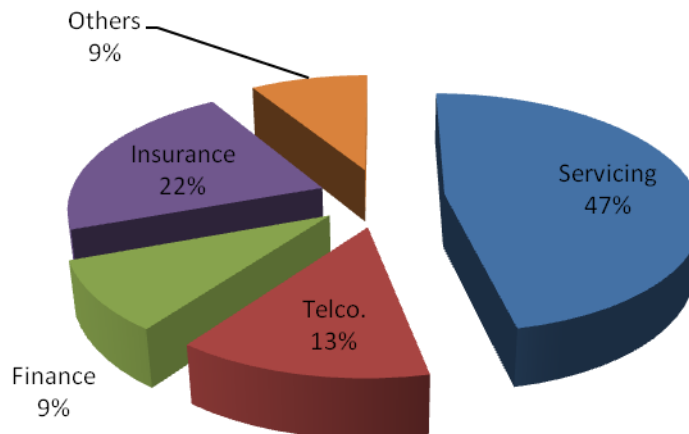
## Market Segmentation

Mixsol's customer base includes all small to large sized business, including start-ups. We plan to concentrate on medium to large sized clients, as they are perfect target for our new Customer Relationship Management solution.

### Segmentation by services



### Customer distribution



## Site References



### **Project Name : Case Management System**

We have successfully developed and implemented Case Management System for Tenaga Nasional Berhad (TNB). This system is to escalate cases from TNB Helpdesk to their fault finder team for maintenance and troubleshooting. The cases are being distributed via handheld system through SMS messaging. We also helped TNB to convert their existing GSM modem to GSM gateway for this purpose. All fault finder team activities are being tracked down and communicated back to the helpdesk system. Helpdesk will be monitoring the case activities through a web based report that is generated by the application.



### **Project Name : Consultation Service**

For Pan Global, we offered our consultation services for their IT department to solve their critical performance issues on their e-Cover Note System. We provided our top notched performance benchmark testing and performance tuning solution with the benchmark reports. Ultimately, we have successfully helped Pan Global to increase the stability and connectivity of their system.



### **Project Name : Database Support and Administration Service**

We provided CIMB with our database support and administration services for their CRM application database using IBM DB2.





T-JOUE

**Project Name : E-Commerce Application**

T-Joue is a new fashion branding company for the group of Hadrons Capital. Mixsol Sdn Bhd helps T-Joue to build an attractive, secured & user friendly online store by utilizing the power of e-commerce. T-Joue online store is a fully functional online application to allow customers of T-Joue to view on the latest fashion items & promotions available. Customers can then easily purchase their favorite items online via a secured online payment gateway.



**Project Name : SCRIBS**

SCRIBS is a browser-based application that provides the necessary functions for CCRIS to manage customer enquiries, enhance control on retrieval of credit reports, and reduce paper work in providing support services to customer, to both internal and external parties. It is designed to put the management, workflow and security in mind so that a smooth stream of customer service operations can be achieved. Mixsol Sdn Bhd took part in the backend system development which involved data integration with AS400 DB2 in Bank Negara.



### **Project Name : Call Rate KPI Reporting**

As one of the top mobile service providers in Malaysia, Maxis initiated a project to monitor and manage their mobile services and performance. Mixsol was chosen as a subcontractor in this project, and we have successfully assisted Maxis in designing and implementing the data warehousing and business intelligent structure. The work included extracting operational database into a data mart for the front-end performance reporting for Maxis 2G and 3G call performance.

### **Project Name : Web Portal Component Development**

Maxis has engaged Mixsol to build and develop web portal components by using Java Portlet technology to create a user friendly and fully interactive web portal for Maxis & Hotlink. The web portal was built on IBM Websphere Portal framework to act as a front-end application for Maxis consumers. Web component or portlet running on the portal will be communicating with the backend system via web services and database connection to provide a fully automated web function to the Maxis consumer to perform the necessary task.



### **Project Name : Customer Relationship Management (CRM)**

Mixsol has implemented web-based CRM solution for companies like Great Vision Sdn Bhd and Jalin Realty. Built with a reliable and scalable J2EE technology, Mixsol helped client to roll out a comprehensive Customer Relationship Management with extensive modules and yet user friendly web experience. Modules of a CRM in automating the businesses tasks like sales, account & contact management, sales pipeline tracking, sales forecast analysis and employee performance evaluation have been implemented as core function of the CRM. Mixsol also implemented required back-office business processing modules, to fulfill the client's requirements in their respective industry.



### **Project Name : Enterprise Resource Planning (ERP)**

An ERP system was implemented in Maclean Services with industry specification to the cleaning services. Mixsol Sdn Bhd assisted Maclean Services in automating all the business process by digitalizing the daily operations. Being the market leader & an ISO certified company in the cleaning services sector, Maclean Services has extensive plan in modernize the business, giving convenience & value services to their customer. Implementation of the ERP is one of the major milestones in the organization in achieving the goal.

## Other Clients



## Partners



## Contact

*Chong Yee Ping (Managing Director)*  
Telephone : +6012 317 3299  
Telephone : +6016 2133 401  
Email: [natecyp@miramaxsolution.com](mailto:natecyp@miramaxsolution.com)

General Telephone : +6016 2133 405  
Facsimile : + 603 8994 1512  
Email : [support@miramaxsolution.com](mailto:support@miramaxsolution.com)